

# 'HAVE YOUR SAY'

Results: Grantville & District Foreshore Reserve Committee  
of Management (CoM) Community Survey



# Survey: 'Tidal Times' Newsletter

## Managing the foreshore reserve:

- Erosion
- Rising sea levels
- Litter and other rubbish
- Vegetation – removal- weeds
- Recreational use
- What are your views?



# EROSION



**Malcolm Drive /Stewart St**

# EROSION



Between Colbert Creek & Deep Creek Rd

# EROSION



**Frederick Drive/Queensferry Jetty Road**

# EROSION

Base of steps & area near Colbert Creek



# Rising sea levels-water inundation



Grantville foreshore: French View Caravan Park – 1 klm either side Pier, Stewart St/Malcolm Drv, bottom of Queensferry Jetty Rd

Pioneer Bay/Gurdies area

Track at Frederick Drv: public access path to beach in winter is ½ under water level & walkway to beach from Stewart St

# Litter & other rubbish



Everywhere: BBQ area at Pier, Deep Creek Foreshore area, car parks at the foreshore and in bushes at Frederick Drv, the bottom of the Hall Reserve and along the foreshore between Grantville Pier to Mary St.

Need to put rubbish bins around



# Litter & other rubbish



Bricks and  
failed sea-wall

‘Clean up old  
debris – very  
dangerous  
materials’

# Litter & other rubbish



Fisherman's litter eg: plastic bags, bait bags, fishing lines, alcohol beverage containers, sea born & inter tidal debris timber and car parts, even dead cows from French Island!

# Litter & other rubbish



‘Grantville Foreshore – trees littered along foreshore now dead and scattered along the beach and broken bottles (people treat it as they see it!! – They see crap – treat it like crap)’

# Vegetation - weeds



Clean up the undergrowth on foreshore

Gorse in Pioneer Bay and Frederick St

Pampas grass, succulents (do they keep the sand intact?)

‘Weeds are a major concern particularly around creeks entering the bay...’  
Overgrown undergrowth and fallen trees off Frederick Drv

The whole reserve from Deep Creek St to the end of Malcolm Drv and further towards Pioneer Bay Village is over run with exotics (end Malcolm Drv – Morning Glory, blackberries, wandering dew, mirror bush)

Agapanthas and other exotics but replanting trees and shrubs is more important

# Vegetation – weeds ‘Who knows the difference?’



What weeds – are they – those revolting TeaTrees and ugly mangroves?  
Not sure, Pioneer Bay???

“How many people would know the difference between a ‘Native’ and an ‘introduced’?”

Does the CoM take the Bass Coast Shire Council list of weeds to be the ones included under this heading? I am unsure of any specific areas of ‘weeds’ that fulfill this definition.

# Loss of native vegetation/illegal removal



Smith's Estate residents have cleared large amounts of tea tree and pig face

Tea Trees – Grantville Mangroves pulled out

South side of the Caravan park to past Mary St mangroves removed to improve the view of property owners and boat access and Queensferry Jetty Rd and where people have tried to ensure a 'view'.

# Vegetation – loss of native vegetation/illegal removal



‘More the issue of not enough fuel is being removed. The Frederick Drive undergrowth is out of control!! Dead trees that we residents would be happy to remove – as they are a public hazard, especially with our winds – should be viewed as doing a service ‘not’ as destroying the environment!!’

# What are your views? Vegetation

- Keep existing lanes to the foreshore (public use them, clear them for safety reasons, undergrowth fire hazard) maintain the foreshore track Frederick Drv, keeping it clear of long grass
- Consider a recreational project of walkways and paths to control public access to sensitive areas



# What are your views? Vegetation

- Get some of the wetland native grasses and tea trees happening again – like the stretch of beach along side Frederick Drive foreshore – looks pretty good. The birdlife is good as well.
- Raise community awareness to the problems, approach landholders and farmers to discuss the issues, and educate the community. Public awareness campaign to reduce the impact that fisherman, farmers, landholders have on the local environment

# What are your views? Vegetation

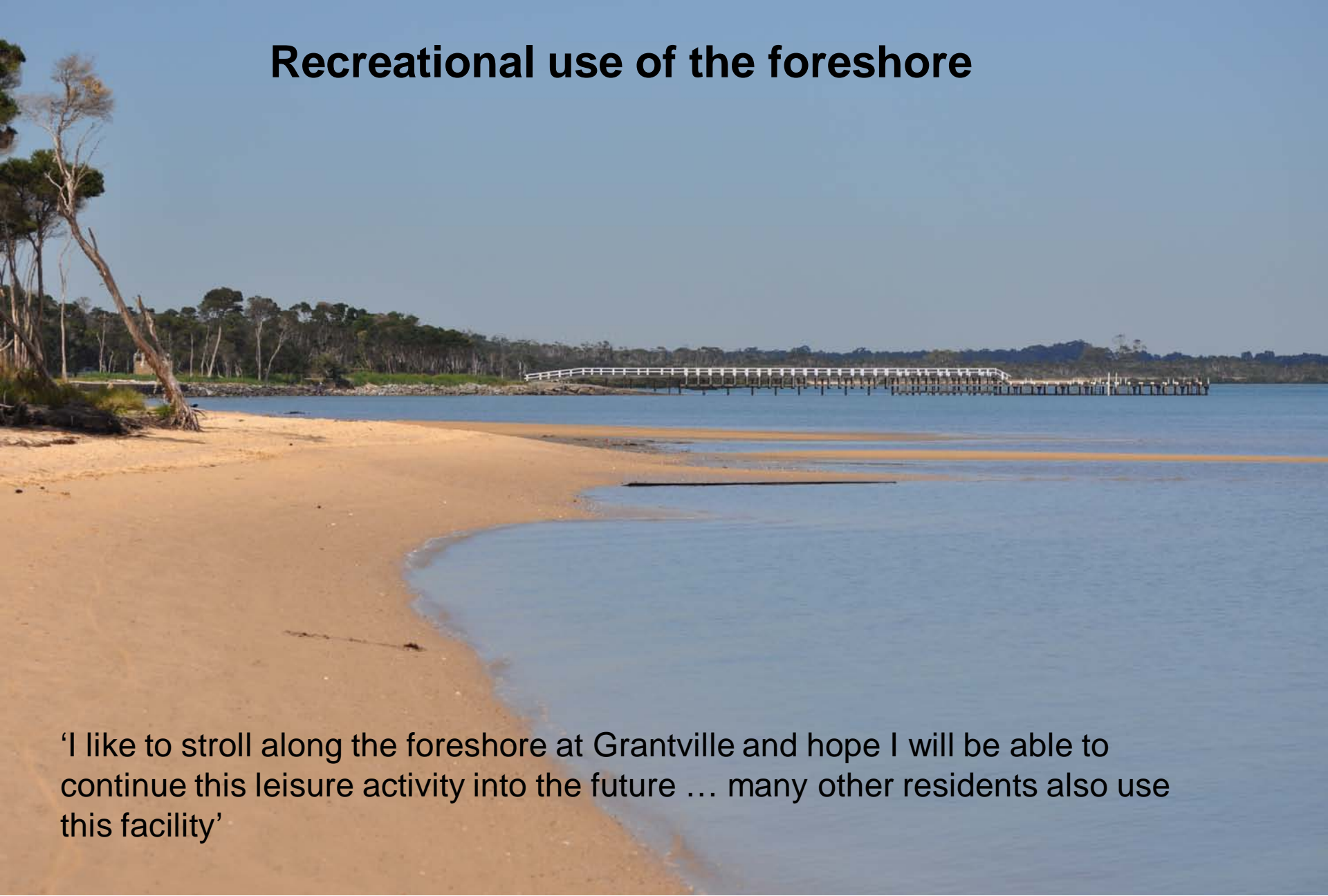
- Serve notices on those who remove vegetation and replant with selected natives
- Rehabilitate areas eroded along the Grantville township
- Plant some interesting trees along beach – palm trees and fernery
- Survey & assist with removal of exotics: willows, mirror plants, oleanders, palms etc

# Recreational use of the foreshore



Ocean kayaking, bushwalking, fishing, beachcombing, photography, boating, kite flying, jogging, BBQ facilities at times, picnicking near Colbert Creek, enjoying sunsets, relaxing.

# Recreational use of the foreshore



‘I like to stroll along the foreshore at Grantville and hope I will be able to continue this leisure activity into the future ... many other residents also use this facility’

Walking on the beach with dogs, children, grandchildren, swimming at high tide, paddling, bird and wildlife observation, building sandcastles.

# What are your views? Access

Clearance of dead trees on Grantville to Pioneer Bay Beach and foreshore

Ecologically sensitive boardwalks along coast from Pioneer Bay to Queensferry Jetty Rd, Boardwalk along the foreshore from Pioneer Bay to Grantville (gravel & boardwalk – all weather traversable) for walkers and bike riders to exercise safely and making use of the foreshore without disrupting natural flora – now step in mud, dead weed litter and mangroves

To promote healthy living

It would promote the area and increase property value



# What are your views?

## Nuisances (vehicles, cats, horses, dog poo!)

- Ban water ski's (motorised), cars, 4 wheel drives and motor bikes from entering tracks 'I know it would be hard to police, but to keep motor bikes off the beach area'
- Cull & capture feral/domestic cats allowed to hunt in reserve. Impose restrictions to private properties and a curfew
- Signs should be put back 'no horse riding', 'no motor bike riding/no cars on foreshore'. Dog poo removal signs essential. Signage is often vandalised,

# What are your views? Tackling erosion

## Strong sea walls/immediate solutions

‘Badly in need of high strong sea walls to cope with stormy weather that pounds the water in a high tide to smash hard against the sea fronts’

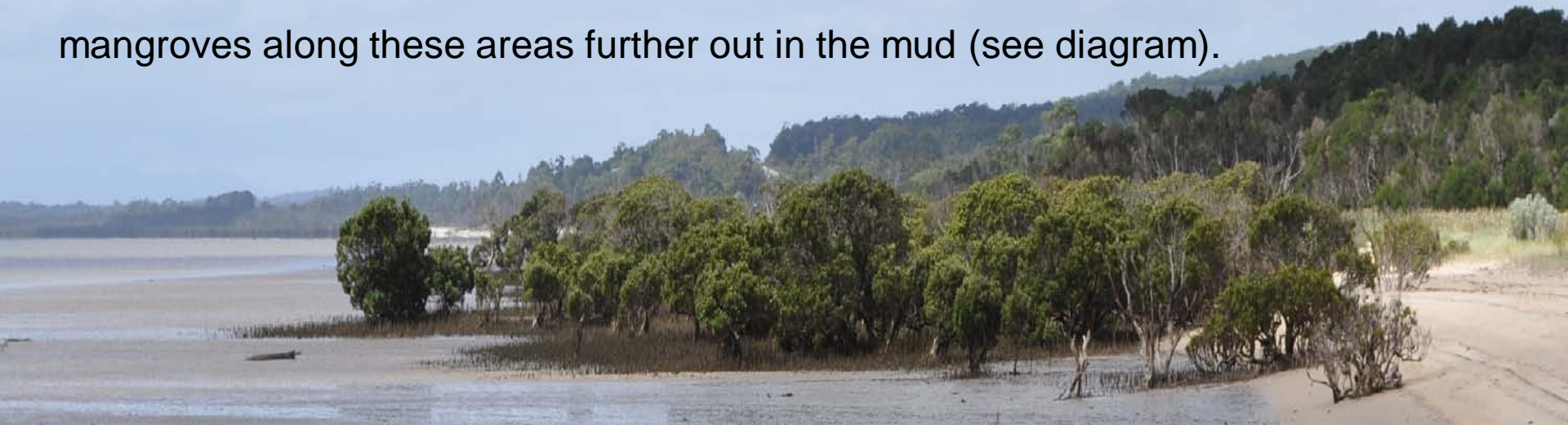


# Tackling erosion: mangroves

‘Rehabilitation program of mangrove planting for long term buffer to tidal and wave erosion’

‘Continue replacing of mangroves and wetland vegetations, dunes and grasses. Forget about the sea wall – a waste to time and money and more importantly an exacerbation to erosion’

‘Drive treated pine poles 2.4m long x 150mm into sand/mud in front of these areas 1.2m down and leave 1.2m protruding, line behind this new ‘seawall’ with geo-material and back fill on shore side. Plant mangroves along these areas further out in the mud (see diagram).





# Tackling erosion: mangroves

‘... we need a solution to erosion now. Mangroves are fine for the long term solution but by the time they’ve established, the entire foreshore will be lost’

‘Mangroves ... they change the nature of the landscape -making it less attractive’

‘Massive plantings of mangroves impact on the amenity of the foreshore and in time provide a breeding ground for mosquitos...risk of blood borne diseases

“Mangrove swamps and saltmarshes are often perceived to present a mosquito 'problem', and to be the source of pest populations plaguing nearby residential areas. It is true that there are often pest mosquitoes in and near the various parts of saline wetlands...”  
(Dept of Medical Entomology, University of Sydney, 2009)’

‘The planting of any mangroves should be strategic and should not be in residential or recreational areas’



# the most imaginative response:

‘How about a beach café? Paved path for strollers and walkers, huge statue of a whale, ferry terminus to an fro to French Island.

Demolish the houses along the beach and put up high rise apartments. Theme Park ie “Movie World”. Rock concert monthly near the pier.

Retaining wall north of pipeline, McDonalds, Supermarket, Ambulance and Police stations.

[and]

Mud wrestling club when the tide is out’.

# What has the CoM been doing?

**Community Building Initiative Grant – produced and distributed ‘Tidal Times’ newsletter**

**Donations: Irene Hanna, Barry Stewart, Barry & Val Bollen, Kevin Chambers, Grantville Newsagency mail service**

**Community survey– to inform our foreshore management plan**

**Port Philip & Westernport Catchment Management Authority Grant \$20,500: to remove weeds (such as gorse etc) at Pioneer Bay & Frederick Drv, revegetate with native plants and repair access tracks**

**Meeting Fire Prevention Officer & the DSE to develop a fire management plan for the Grantville & District foreshore area**

**Working with DSE to address problems of erosion and removal of old sea wall debris along Malcolm Drv Foreshore**

A photograph of a sunset over a large body of water. The sun is a bright, glowing orb in the center of the sky, casting a shimmering reflection on the water's surface. The sky is filled with soft, golden light and scattered clouds. In the foreground, the dark silhouettes of trees and a wooden pier are visible against the bright background. The pier extends into the water on the left side of the frame. The overall mood is peaceful and serene.

**The Grantville & District Foreshore  
Reserve Committee of Management  
would like to express their appreciation  
to all those who responded to our survey  
“THANK YOU”**