



*'bridging community and environmental needs'*

**GRANTVILLE & DISTRICT** FORESHORE COMMITTEE of MANAGEMENT

Presentation to the:  
Grantville & District Residents & Ratepayers Association

Friday, 27<sup>th</sup> May 2011

# **SINCE THE G & D R R A MEETING**

**25<sup>th</sup> Feb 2001**

Eighteen months after our appointment the GADFC Committee have been formally appointed by the Minister as the Committee of Management of the foreshore from Broome Court, Grantville to Pioneer Bay.



Map provided by Bass Coast Shire

# PIONEER BAY

Committee members meet with Bass Valley Landcare to:

- arrange re-vegetation to offset vegetation removed for the boardwalk
- Spray weeds, and blackberries

**Gorse seedlings have been spayed**





# PIONEER BAY

- **Signage**

- Access – Foreshore access via boardwalk
- Restriction
- Educational

# COASTAL SALTMARSH

In this area the saltmarsh occurs on and immediately above the marine and estuarine tidal flats between the mangroves and grassy shrubland.

Austral Seablite  
*Suaeda australis*

*Atriplex cinerea* / Coast  
Saltbush

Rounded Noon-flower  
*Disphyma crassifolium* ssp. *Clavellatum*

Beaded Glasswort  
*Sarcocornia quinqueflora*

Saltmarsh vegetation  
found at this location  
includes salt tolerant  
plants such as herbs,  
grasses and succulents

Streaked Arrowgrass  
*Triglochin striatum*

*Sclerostegia arbuscula*  
Shrubby Glasswort





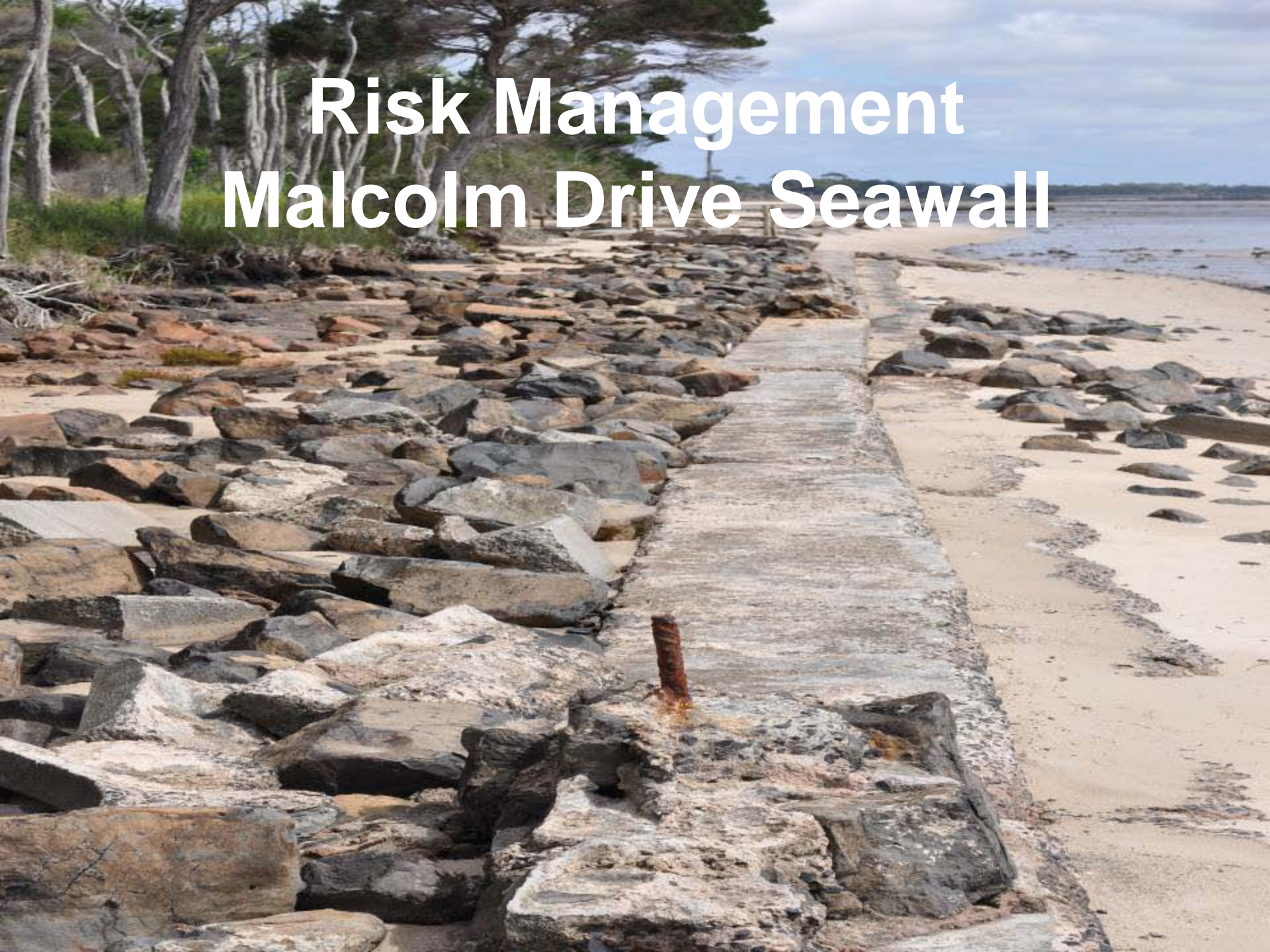
# GRANTVILLE

- Risk management

## **Coastal Risk Mitigation Grant Application**

to remove iron rods, illegal structures and small rock rubble

# Risk Management Malcolm Drive Seawall











# GRANTVILLE

- **Weed removal**

**The DSE has advised the Committee that weeding work will commence along the Malcolm Drive Foreshore next week.**

**First stage – woody weeds (Mirror bush)**

# **FIRE PREVENTION PLAN**

- GADFC met with members of DSE fire branch, CFA and Bass Coast Shire to identify fire risk along the foreshore reserve and develop a fire prevention plan
- Due to floods/staff secondment this is on hold



# Volunteer Coordinator Safety Leadership Training

- understand health & safety roles and responsibilities
- develop a safety management plan for a volunteer program
- plan and conduct a hazard inspection of an activity and site
- identify and implement safe practices for volunteer activities

# **MANGROVE PLANTING**

**Seagrass Partnership advised the committee**

- **5,000 mangroves will be planted along 1 kilometre of the foreshore between Deep Creek St and Colbert Creek**
- **3 rows of mangroves with 1 metre between each row and one metre between mangroves**
- **10 metre breaks every 200 metres**

**Planting has commenced at Deep Creek Street**





Map provided by Bass Coast Shire

**Enquiries:**

**[Leanne.khan@dse.vic.gov.au](mailto:Leanne.khan@dse.vic.gov.au)**

**[info@seagrass.com.au](mailto:info@seagrass.com.au)**

**[p.smith@basscoast.vic.gov.au](mailto:p.smith@basscoast.vic.gov.au)**



# DSE information day

- Proposed off shore reef (sausage sand bags) to protect mangrove seedlings
- Removal of 500 cubic metres of sand from the beach between Deep Creek St and Colbert Creek
- GADFC have received a lot of negative feedback from the community

# Jam Jerrup

In response to this negative feedback the DSE have decided to commence their offshore reef program at Jam Jerrup



**Thank you**

**Co-operative Research  
Centre for Asthma &  
Airways for the loan of  
the data projector and  
computer**