



'bridging community and environmental needs'

GRANTVILLE & DISTRICT FORESHORE COMMITTEE of MANAGEMENT

Presentation to the:
Grantville & District Residents & Ratepayers Association

Friday, 26th August 2011

For more information please visit our website: www.gadfc.com.au

PIONEER BAY

Spraying of weeds including blackberries has been undertaken

Tussock grasses, Boobialla and Coast Banksia have been planted to offset vegetation removed to make way for the boardwalk.

Melaleuca is regenerating

Foreshore access signs pointing to the boardwalk being installed at the location of the old access track

PIONEER BAY



Common Boobialla

Myoporum insulare

PIONEER BAY



Tussock-grass *Poa labillardierei*

PIONEER BAY



Coast Banksia

Banksia integrifolia

PIONEER BAY



Swamp Paperbark

Melaleuca ericifolia

PIONEER BAY

Educational signage has been installed along the boardwalk

COASTAL SALTMARSH

In this area the saltmarsh occurs on and immediately above the marine and estuarine tidal flats between the mangroves and grassy shrubland.



Austral Seablite
Suaeda australis



Coast Salttough
Atriplex cinerea



Karkalla
Carp. Rossii



Beaded Glasswort
Sarcocornia quinqueflora



Knotted Club Rush
Ficinia nodosa

Saltmarsh vegetation found at this location includes salt tolerant plants such as herbs, grasses and succulents.

Berm Grassy Shrubland

Berm grassy shrubland occurs in sheltered coastal areas where sand deposits have formed as a result of low energy wave action

Grass shrubland includes a ground layer of grasses, shrubs and herbs which provide food and habitat for a variety of fauna. In Western Port Swamp Paperbark (*Melaluca ericifolia*) is often present on the land ward side of the saltmarsh.



Ficinia nodosa
Knobby Club-sedge



Coast Saltbush
Atriplex cinerea



Blue Wren



Willy wagtail



Blue tongued lizard



Ech

MANGROVES

The white mangrove produces clusters of small orange-yellow flowers.

In Victoria flowers occur in May and June, and mature seeds drop onto the mudflats in January and February.

Mangroves usually grow in soft sediments in the intertidal zone of sheltered estuaries, inlets and bays and together with coastal saltmarsh they form a link between land and sea.

The mangroves growing at this site are known as the White Mangrove (*Avicennia marina*) and is the only species found in Victoria.



They have a well defined trunk and numerous peg roots or pneumatophores which are their breathing roots.

Cormorants and ibis roost in the mangroves.

Besides sediment stability they provide a sheltered habitat for a range of animals including shellfish, shrimp and worms.

The mangrove seed also provides an important food source for crabs.

Wading birds such as the common sandpiper and greenshank forage in the mud.

mature seed



GRANTVILLE

Coastal Risk Mitigation Grant Application

to remove iron rods, illegal structures and small rock rubble was successful. These works are expected to commence in early September





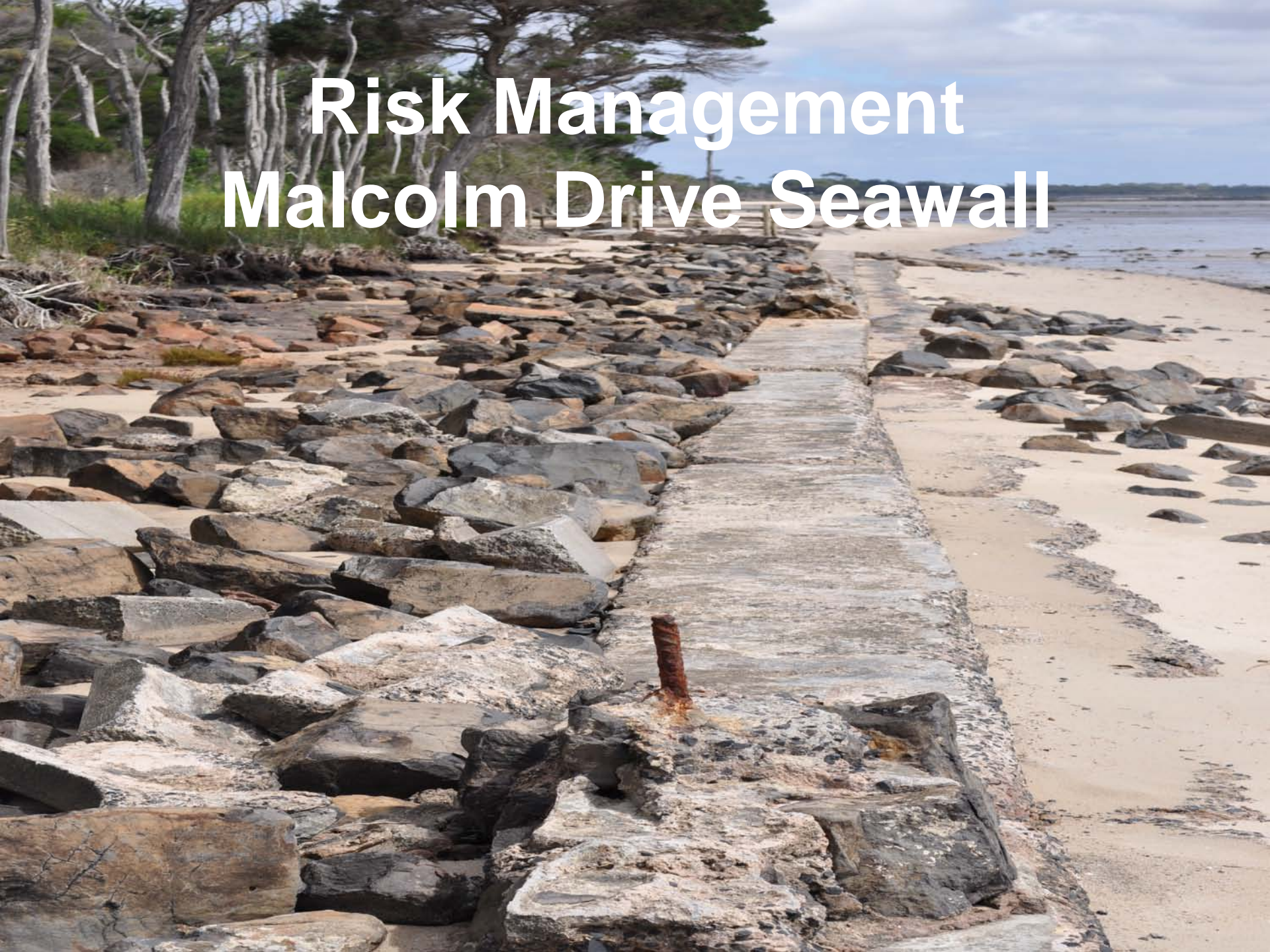


GRANTVILLE

Still awaiting DSE coastal processes study for outcome on the implementation of the concept design drawn up by a coastal engineer 12 months ago

The design deals with the removal of concrete rubble off the beach, making the area safe to walk on, and also with erosion

Risk Management Malcolm Drive Seawall





GRANTVILLE – WEED REMOVAL

The DSE recently contracted weeding work along the Stewart St and Malcolm Drive Foreshore reserves

The first stage is the removal of woody weeds (Mirror bush) one third in on the inland side

Contracted works have now been completed but more weed removal will continue as more funds become available

GRANTVILLE REMOVAL WOODY WEEDS



Mirror Bush *Coprosma repens*

FIRE PREVENTION PLAN

GADFC met with members of DSE fire branch, CFA and Bass Coast Shire to identify fire risk along the foreshore reserve and develop a fire prevention plan

Still in progress

MANAGEMENT PLAN

GADFC members currently developing a Management Plan

- Precinct 1 – Broome Crt to Malcolm Drive
- Precinct 2 – Malcolm Drive to Pioneer Bay
- Precinct 3 – Pioneer Bay

MANAGEMENT PLAN

Committee have undertaken a SWOT analysis of each precinct

- **Strengths**
- **Weaknesses**
- **Opportunities**
- **Threats**

BOARDWALK EXTENSION



GRANTVILLE – ACCESS TRACKS

The Committee are looking into ways to both improve the Stewart St and Malcolm Drive foreshore access tracks and to make them more obvious

FUTURE DIRECTIONS

The GADFC have identified that in 5 years they would like:

- A community of foreshore residents and users that is well informed, supportive and interested in improving and conserving the reserve
- A clean foreshore, free of litter and illegal structures
- The relevant authority remodels or redesigns the sea wall or removes any debris from the beach

FUTURE DIRECTIONS

- Reserve which is free of weeds and exotic vegetation with the gaps in the bushland replanted
- Well signed and maintained official access tracks to the beach all the way from mouth of Deep Creek to Pioneer Bay
- The Committee has a record of good financial management and record keeping , necessary to maintain the confidence of our funders and the community

DSE - OFFSHORE REEF

Coastal processes study indicates:

- 3 sausage sand bags
- 50 metres each in length
- 1-2 metres high

required and will be installed 60-70 metres off shore parallel to the shoreline

Acknowledgement:

**Co-operative Research Centre for Asthma & Airways
for the loan of the data projector and computer**

