

Grantville & District Foreshore Reserve Committee of Management Report: 27th August 2010



What have the CoM been doing since the last Ratepayers meeting?

The Committee are now incorporated and have been able to establish their own bank account, ABN number and tax free gift recipient status.

Access & Amenity

The Com have achieved funding from the DSE for a boardwalk at Pioneer Bay

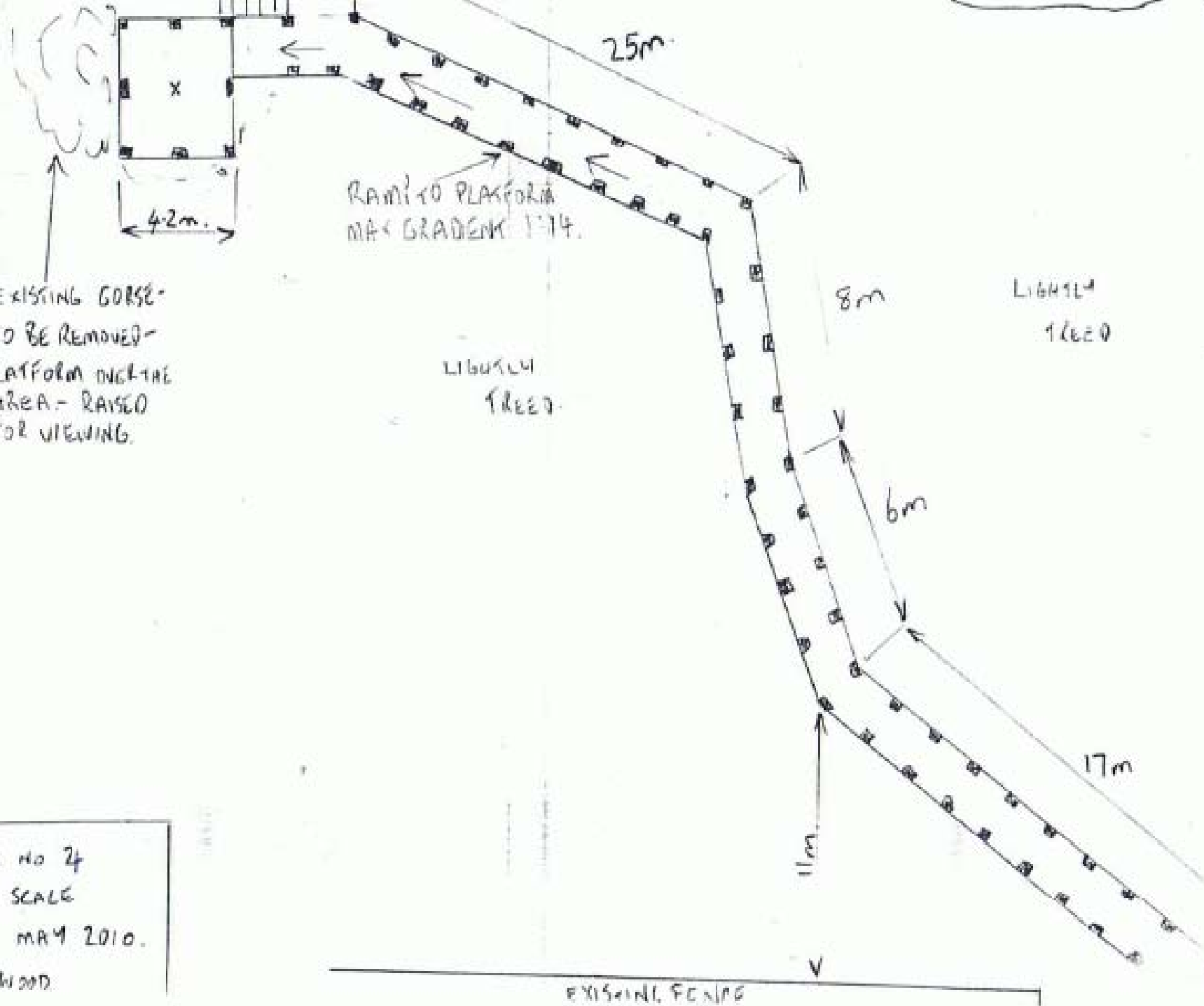
Plans have been drawn up for a 58m long x 1200mm wide ramp style boardwalk

An application for removal of native vegetation has been submitted to the Bass Coast Shire

Access & Amenity

Access to the Pioneer Bay foreshore currently involves walking along a track directly located behind a well established mangrove colony and walking through areas of salt marsh and native vegetation which places these plants under threat from trampling.



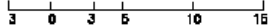


SKETCH NO 24
 NOT TO SCALE
 DRAWN MAY 2010.
 B. WESTWOOD

Site map

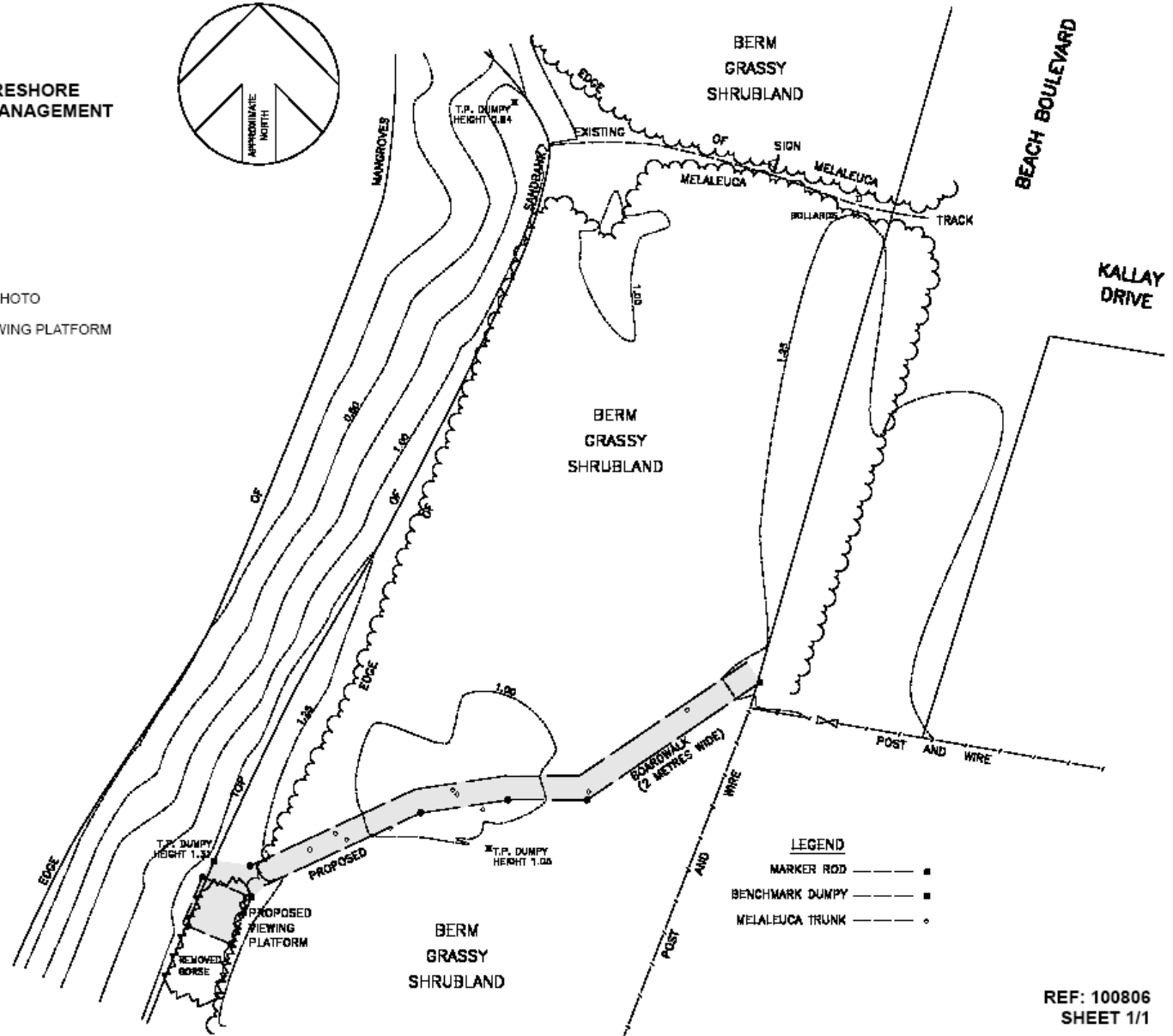
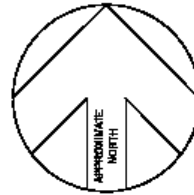
CONTOUR AND FEATURE PLAN
 PROPOSED BOARDWALK
 PIONEER BAY
 GRANTVILLE AND DISTRICT FORESHORE
 RESERVE COMMITTEE OF MANAGEMENT

SCALE:



NOTES:

- * HEIGHTS TO ARBITRARY DATUM
- * CONTOUR INTERVAL 0.25 METRES
- * ORIENTATION VIDE SUPPLIED AERIAL PHOTO
- * AREA OF PROPOSED BOARDWALK/VIEWING PLATFORM (SHOWN SHADED) - 116 m²
- * ORIGINAL SHEET SIZE - A3
- * ORIGINAL SCALE - 1:300
- * DATE OF SURVEY - 17/08/2010



Boardwalk: Pioneer Bay



Education

As well as protecting the integrity of the mangrove and saltmarsh wetland, the boardwalk will include a viewing platform with seating and signage detailing the vegetation and its role in the ecosystem.

Education

The signage will depict the ecological significance and biodiversity of this site and will raise awareness and appreciation of:

- the habitat diversity and high biological productivity of this wetland area
- how it supports wildlife, such as shorebirds, water birds, fish etc.
- how it acts as a sediment trap, filtering nutrients
- how it provides the shore line with protection from wave action





Strategic planting of mangroves



Preserving the amenity of the foreshore

The CoM do not support planting of mangroves along:

- Frederick Drive foreshore
- Foreshore from Pier Rd to end of Malcolm Drive

Residential, recreational (sandy beaches) no erosion or erosion needs immediate solutions









Seagrass Partnership

- CoM have met with the Board of the Seagrass Partnership to negotiate planting mangroves in areas which are less residential or recreational eg: south of the jetty at Pier Rd

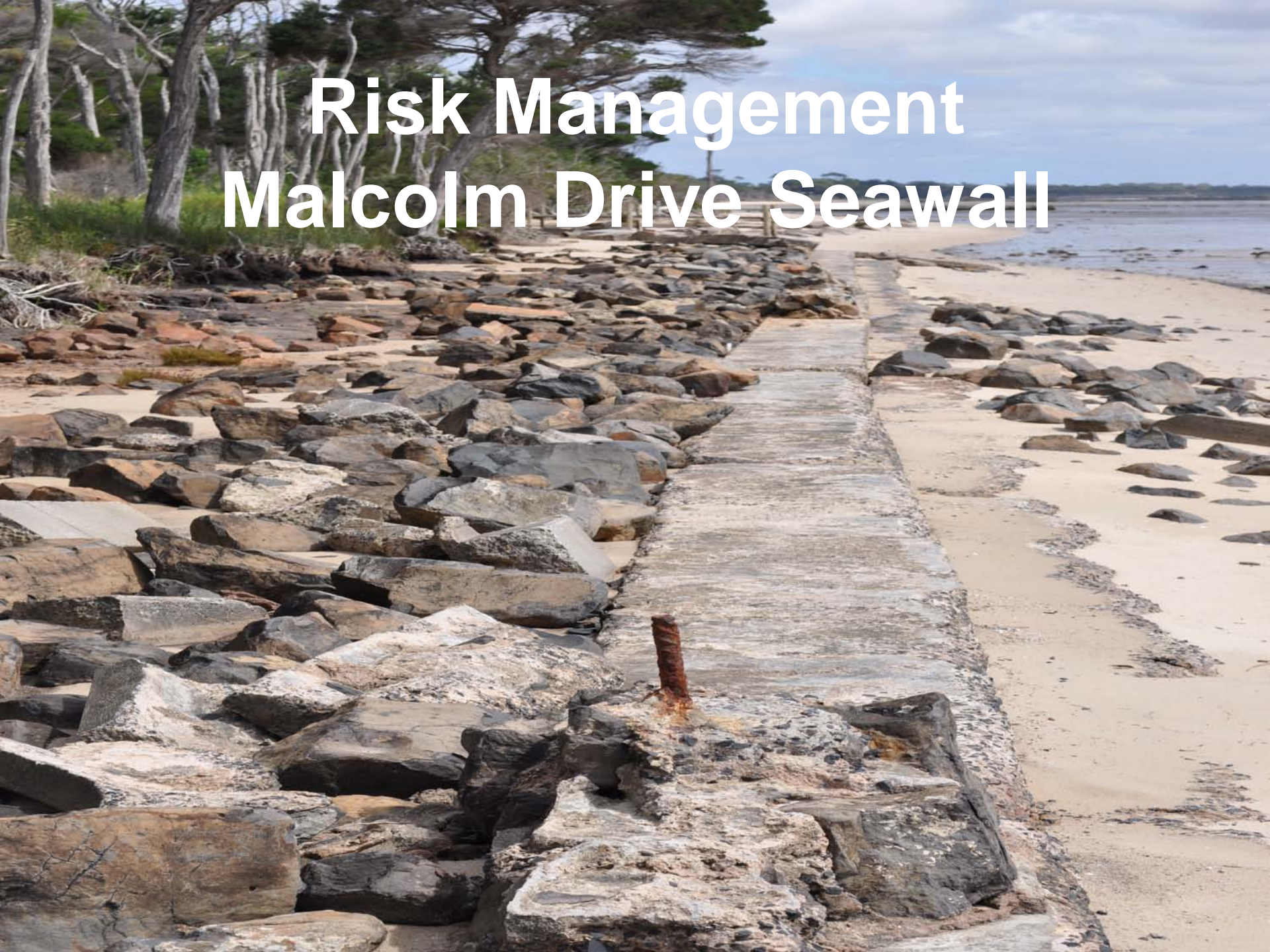
Meeting with Bass Coast Shire

The CoM have also met with representatives from the Bass Coast Shire to discuss and develop a:

‘Memorandum of Understanding’

in regard to the area of foreshore which overlaps with the shire management

Risk Management Malcolm Drive Seawall



Concept designs have been drawn up for removal of the seawall ruins

Problems encountered

- The CoM have recently learned from the DSE that the land that they have been appointed to manage is in fact land which is under the jurisdiction of Parks Victoria
- Currently Parks Victoria and the DSE are negotiating that this area of land be returned to the DSE and that the CoM continue to act as Land Managers

What does this mean?

Unfortunately, the works on the Malcolm Drive seawall and the Pioneer Bay Boardwalk are likely to be delayed until the land management ownership issue is resolved

Thank you

Co-operative Research Centre for Asthma
and Airways for the loan of their data
projector and computer